



PRODUCT MANUAL



FOX VALLEY MODELS HO SCALE USRA 55-TON 2-BAY OPEN HOPPER

Fox Valley Models™ is the intersection of value and accuracy, giving modelers quality options to recreate their favorite railroad(s). Designed to capture the spirit of the prototype, Fox Valley Models include separately applied railroad-specific details whenever possible.

Coal hopper cars were specially designed in the late 1800s to transport coal to railroads, factories, and homes.

The basic design had an open top for loading, slope sheets for unloading, and bays with doors for quick unloading. The design was improved over time to increase capacity, and the US Railroad Administration standardized the 55-ton all-steel open hopper during World War I. Over 22,000 were produced and widely used through the 1960s and early 1970s.

DETAILED SCALETRAINS

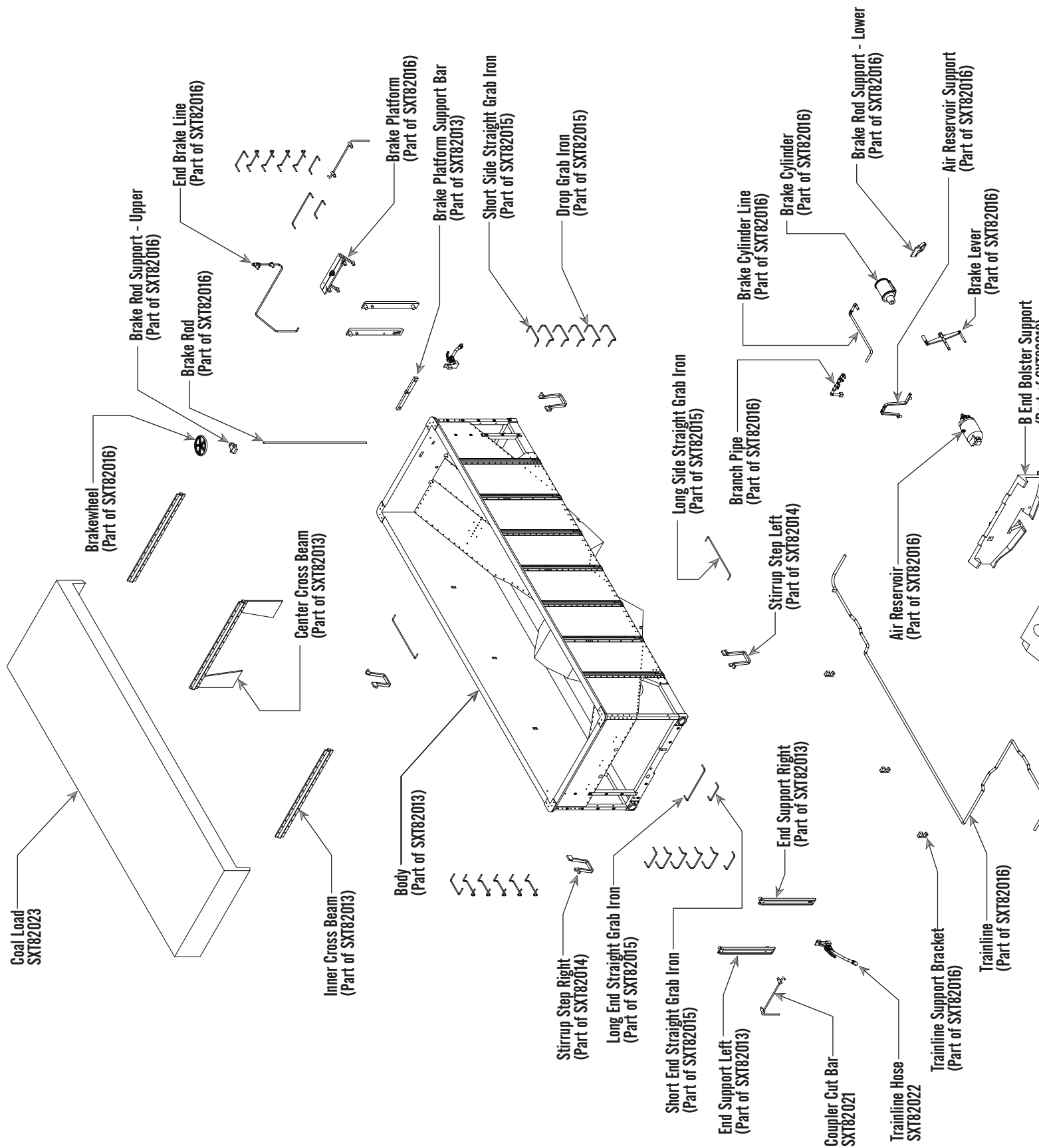
- Multiple road numbers
- Fully assembled
- Finely cast stirrup steps; end ladders; underbody and brake system
- Wire grab irons
- Separately applied handbrake wheel
- Detailed trucks
- 33" Machined metal wheels
- Accurately profiled .110" wide wheel tread
- Plastic semi-scale Type E knuckle couplers, Kadee compatible
- Body mounted coupler box will accept Kadee whisker couplers
- Weighted to Industry standards
- Operates on Code 70, 83 and 100 rail
- Packaging safely stores model when assembled
- Minimum radius 18"

ScaleTrains • 4901 Old Tasso Rd NE, Cleveland, TN 37312 • www.ScaleTrains.com
Toll-Free 844-9TRAINS • International 423-299-3689

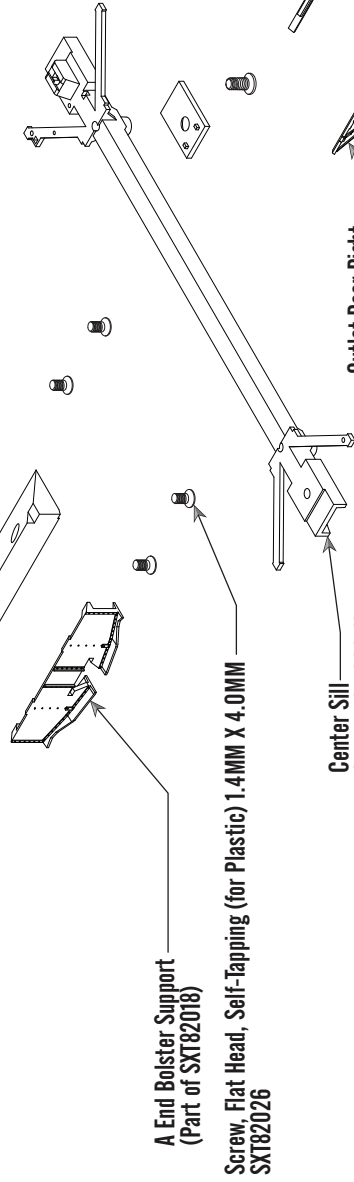
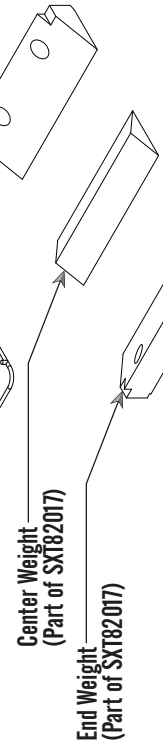
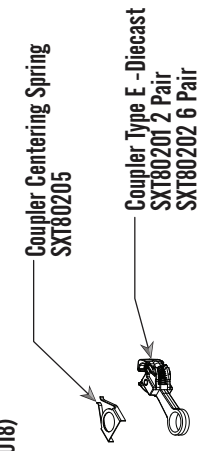
WARNING: This product may contain a chemical known to the State of California to cause cancer or birth defects or other reproductive harm.
© 2023 ScaleTrains.com, Inc., ScaleTrains, Rivet Counter and respective logos and slogans are trademarks of ScaleTrains.com, Inc.



SXT82012



(Part of SXT82018)



Outlet Door Latch Mechanism
(Part of SXT82019)

Outlet Door Latch Rod
(Part of SXT82019)

Outlet Door Latch Actuator - Right
(Part of SXT82019)

Outlet Door Actuator Bar
(Part of SXT82019)

Outlet Door Left
(Part of SXT82019)

Outlet Door Stiffener
(Part of SXT82019)

Outlet Door Connection Bar
(Part of SXT82019)

Outlet Door Latch Keeper
(Part of SXT82019)

Truck, Andrews
SXT82025

Brake Beam for Andrews Truck
(Part of SXT82025)

Truck, Friction Bearing
SXT82024

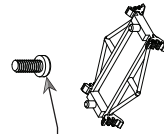
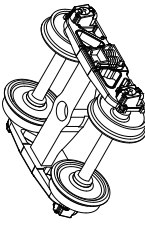
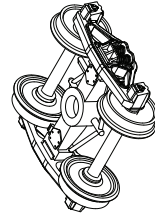
Center Sill
(Part of SXT82018)

Coupler Box Cover
SXT82020

Screw, Flat Head, Machine 2.0 X 4.0MM
SXT80589

Outlet Door Latch Actuator - Left
(Part of SXT82019)

Screw, Round Head, Machine, 2.0MM X 5.0MM
SXT80084



FOX VALLEY MODELS HO SCALE USRA 55-TON 2-BAY OPEN HOPPER

SXT82012	Instruction Sheet FM 55 Ton 2-Bay Hopper	SXT82020	Coupler Box Cover	SXT80084	Screw, Round Head, Machine, 2.0MM X 5.0MM
SXT82013	Body Assembly	SXT82021	Coupler Cut Bar	SXT80201	Type E coupler - Die Cast 2 Pr.
SXT82014	Stirrup Step Set	SXT82022	Trainline Hose	SXT80202	Type E coupler - Die Cast 6 Pr.
SXT82015	Grab Iron Set	SXT82023	Coal Load	SXT80205	Coupler Centering Spring
SXT82016	Brake System Parts	SXT82024	Truck Friction Bearing	SXT80206	Coupler Knuckle Spring
SXT82017	Weight Set	SXT82025	Truck Andrews		
SXT82018	Underframe Set	SXT82026	Screw, Flat Head, Self-Tapping (For Plastic) 1.4MM X 4.0MM		
SXT82019	Outlet Set	SXT80589	Screw, Flat Head, Machine 2.0 X 4.0MM		

For a list of parts included in each parts set, see the exploded view.



PRODUCT SUPPORT

U.S. 844-9TRAINS; 844-987-2467 Ext. 2
International 423-299-3689
Support@ScaleTrains.com



ScaleTrains

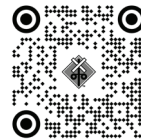
4901 Old Tasso Rd NE,
Cleveland, TN 37312 USA



www.ScaleTrains.com

SIGNUP FOR OUR WEEKLY NEWSLETTER

www.ScaleTrains.com/newsletter



FOLLOW SCALETRAINS



WARRANTY POLICY

ScaleTrains.com, Inc. (ScaleTrains) warrants products purchased from our website to be free from defects in material and workmanship for a period of two (2) years from the date of purchase. Products purchased directly from ScaleTrains are automatically registered and a receipt is not required for proof of purchase.

ScaleTrains warrants products purchased from an authorized Select Retailer to be free from defects in material and workmanship for a period of one (1) year from the date of purchase. The warranty period can be extended to two (2) years by registering the product within 30 days of purchase on our website at www.ScaleTrains.com/warranty. Be sure to retain the receipt as proof of purchase as it may be required in the event your model requires warranty service by our Service Center.

If the product fails during the limited warranty period, carefully pack the model in the original packaging. Be sure to include an explanation of the issue(s) along with your name, address, phone and email. If the product(s) were purchased from a Select Retailer, include a legible copy of the sales receipt.

Ship item(s) for repair to our Service Center at...

ScaleTrains Service Center
4901 Old Tasso Road NE
Cleveland, TN 37312

We recommend using a trackable shipping service. Shipping damage incurred on the way to our service center and costs associated with shipping are not covered under warranty.

Damages due to improperly storing, handling, or packaging are not covered under warranty.

If ScaleTrains.com deems the product to be defective, we will either (1) repair (2) replace the item, or (3) offer a store credit redeemable at ScaleTrains.com toward a future purchase. This determination is at the sole discretion of ScaleTrains.

ScaleTrains has the final decision on all warranty matters. The warranty policy is subject to change without notice.